

2010

Authorize.Net



Jim Kirker

Ice5Commerce

9/23/2010

Authorize.Net Payment Gateway Setup

Setting up your Authorize.Net payment gateway is not that difficult with Internet Commerce Engine 5. All versions of Internet Commerce Engine 5 have the same GUI interface for you to use, so installation instructions are universal.

Getting Started

Start by accessing the Site Administrator Program.

If you are using your computer to build the site, just click on the desktop icon. That says Start ICE5.

If you have already deployed your site to your web server, then you should have the URL to your Site Administrator memorized or bookmarked by now.

Once the Site Administrator opens, enter your credentials to proceed to the Order Scoreboard.

***You must have Security Level 5 access to the program in order to use the Setup Tools.**

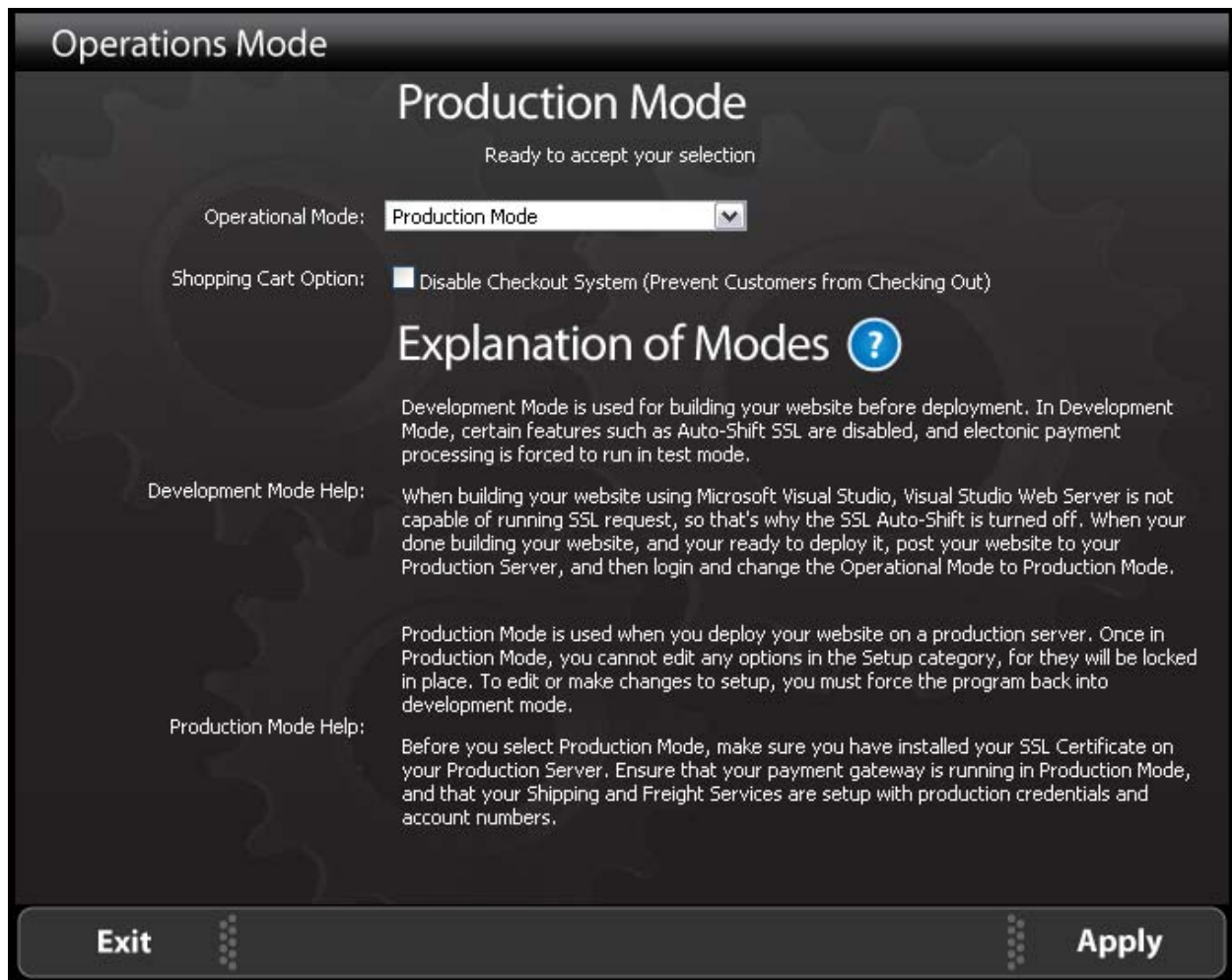
Place your mouse over the Setup Menu button, to make your selection

The screenshot displays the Ice5Commerce Site Administrator interface. At the top, it shows the website name 'TroxellUSA.com', account name 'jkirkerx', last login '8/23/2010 9:21:21 AM', registered email 'jkirker@redcopper.net', security preference 'Public Location', and activity time '5 Minutes'. The main navigation bar includes buttons for 'Scoreboard', 'Orders', 'Payments', 'Reports', 'CRM', 'Management', 'Setup', and 'Logout'. The 'Setup' button is highlighted. The main content area is divided into two sections: 'Site Administrator' and 'Order Scoreboard'. The 'Site Administrator' section contains a list of menu items: 'Site Administrator Home Page', 'Program Management', 'Contact Us Management', 'Customer Management', 'ICES User Management', 'Product Management', 'Shipping Management', 'Sales Tax Management', 'Search Engine Management', and 'Secure Logout'. Below this is a 'Tips and Help' section with a question mark icon and text: 'Use the Site Administrator Scoreboard to check the status of your site. Common daily tasks have been grouped together to help you expedite order transactions.' The 'Order Scoreboard' section features a large 'ice5' logo and displays 'Store Activity' with the following data: 'Orders Pending: 5', 'Messages Pending: 12', and 'Settlements Pending: 0'. It also shows 'Daily Store Tasks' with buttons for 'Check Messages', 'Take Order', 'Batch Capture', 'Process Orders', 'Ship Orders', and 'Sales Report'. A 'Logout' button is located at the bottom right of the main content area. The footer of the interface includes 'North American Standard Edition 2010 - EN-US' and 'Copyright © redCopper, Inc. 2011'.

Operational Modes

Internet Commerce Engine 5 runs in 2 modes of operation. You must be in development mode in order to change the payment gateway. If you are running in Production Mode, then you will not be able to change any of the settings. This is a safety feature that prevents anyone from changing the stable runtime operation of the program while in use.

To change the program back to development mode, follow the instructions below.



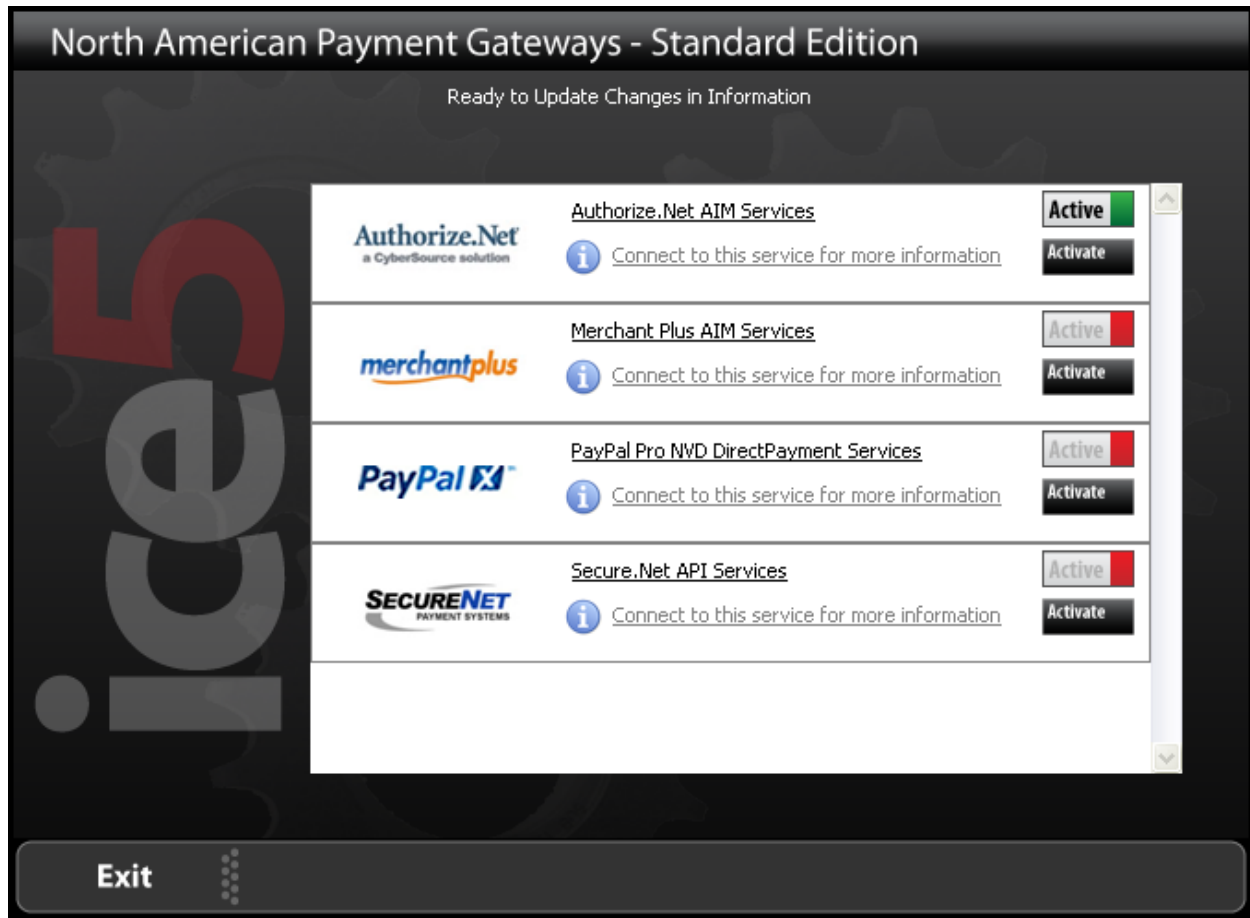
First Disable the Checkout button to make sure no else can checkout. Then select Apply.

You may wish to wait 20 minutes before shutting down the program, to make sure no one is in the checkout lane. If you receive messages from the Sales Messenger, then you should already know how many people are in the checkout lane.

Change the Operational Mode by using the combo box, and selecting Development. A warning message will appear, and select OK to continue the process.

Payment Gateway Interface

Use the Setup menu button to navigate to Payment Gateway. Once selected, the Payment Gateway Interface will appear. Use your mouse to select Authorize.Net.



After selecting the proper gateway, the gateway interface will then be displayed.

***Note:**

Make sure to activate the Payment Gateway when done by pressing the activate button on this interface. Then make sure the green light is on the payment gateway of choice. Failure to do so will result in checkout errors.

Authorize.net Interface

This is the Authorize.Net Payment Gateway Interface.

You will need 2 pieces of information to program your payment gateway successfully. To get your ID and Key, you must login to the Merchant Interface on the Authorize.net website, and request your key.

<https://account.authorize.net/>

- Merchant API ID
- Gateway Transaction Key

Once you have obtained your Gateway Transaction Key, copy and paste the key value into the 2nd box from the top. Now get your merchant ID, and paste it into the top box, and hit apply.

The screenshot shows the Authorize.Net merchant interface for configuring payment gateway credentials. The page is titled "Payment Gateway Credentials" and includes a sub-header "Ready to accept your selection".

Merchant API LoginID: 8Pj4h97xpT9

Gateway Transaction Key: [Redacted]

API Information

Authorization Method: Auth_Capture (Settle Transactions Automatically at the Settlement Time)

Gateway Operation Mode: Production Mode

Gateway Server Production URL: https://gateway.authorize.net/gateway/transact.dll

Gateway Server Development URL: https://test.authorize.net/gateway/transact.dll

Auth Capture Settlement Time: 17 :30 Pacific Standard Time UTC -8

Currency Code: United States Dollar

Country Code: United States

Special Features

AVS (Reverse Address Verification): Use AVS against ship to address (About \$1.20 per transaction)

ACH Check Processing: Process ACH Electronic Checks (about \$20.00 per month)

Wells Fargo: Use Secure Source (required for Wells Fargo Customers)

Authorize.Net a CyberSource solution

Need an Authorize.Net Payment Gateway?
Click Here to Sign-up Today! As low as 10.95 per month

Exit **Apply**

There are other features that can now be entered into the interface. Read the descriptions below to make the right choices.

Authorization Method

You can run your gateway in 2 modes of operation. Auth_Capture automatically captures your payment at the end of each day at the programmed settlement time. Auth_Only requires that you capture payments manually with Internet Commerce Engine 5.

Gateway Operation Mode

You have 2 modes of operation for your payment gateway. One is Production, in which all transactions are real, and the other is the testing environment or sandbox, in which you issue test transactions.

When in testing mode, the checkout lane will display a red banner at the top of the page, reminding you are in test mode, and that charges do not really apply.

Production URL

This value is filled in for you automatically. There is no need to change the value. If however, you need to change the value, paste the new value in and select Apply to save the changes.

Development URL

This value is filled in for you automatically. There is no need to change the value. If however, you need to change the value, paste the new value in and select Apply to save the changes.

Auth Capture Settlement Time

This is the time you programmed into your merchant setup on the Authorize.net website. The time you select here must be the exact same time. If your web server is in another time zone, then please make the proper time adjustments to reflect the actual time of the server's location. All times are in the server's time zone.

Currency Code

Select your default currency. All transactions will be submitted in the selected currency.

Country Code

Select your default country code.

Gateway Programming Complete

You can either conduct test runs in development mode to confirm that your credentials are correct, or go back into production mode, by changing the operational mode of the program. We recommend you go back to production mode, and checkout using a real credit card, just to be safe.

***Don't forget to activate the gateway, by pressing the activate button, and the light turns green.**